



# SLOT VISION

Technology: MULTI-ROOM®



## TECHNOLOGY



## OPTIONAL



BLACK



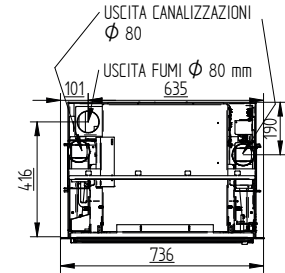
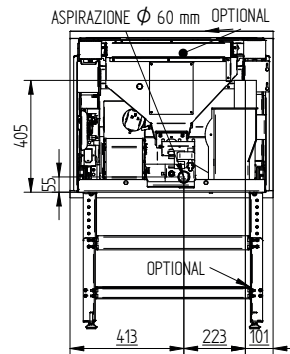
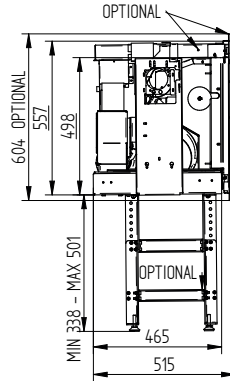
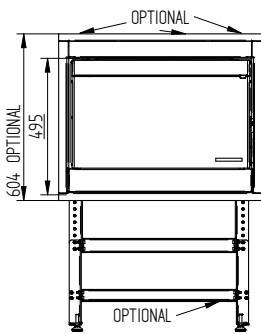
BRONZE



INOX

Potenza Globale Global Power Puissance globale Potencia global Verbrennungsleistung	<b>KW</b>	<b>KW</b>	<b>%</b>	<b>KG</b>	<b>KG/H</b>	<b>°C</b>	<b>PA</b>	<b>MM</b>	<b>MM</b>	<b>KG</b>	<b>W</b>
Potenza Nominale Nominal Power Puissance Nominale Potencia Nominal Nennleistung	<b>12 kw</b>	<b>10,8</b>	<b>9,6-3,9</b>	<b>117</b>	<b>0,89-2,26</b>	<b>174-105</b>	<b>11-8</b>	<b>80</b>	<b>60</b>	<b>≈10</b>	<b>100</b>
Rendimento totale Total efficiency Puissance globale Potencia global Pellet Wirkungsgrad											
Peso Weight Poids Peso Gewicht											
Consumo min-MAX Min-Max consumption Consommation min-MAX Consumo min-maxi Min-Maxi verbrauch											
Temperatura gas di scarico Exhaust gas temperature Température des gaz d'échappement Temperatura de los gases de escape Abgas Temperatur											
Tiraggio richiesto in funzionamento Draw required in operation Dessiner nécessaire en fonctionnement Dibujar requerido en la operación Erforderlicher Betriebszug											
Uscita fumi Chimney Output Sortie conduit de cheminée Salida conducto de humos Rauchauslass											
Ingresso aria Air Intel Entrée d'air Lutemiss											
Serbatoio pellet Pellet tank Réservoir Depósito Tank Fassungsvermögen											
Assorbimento elettrico watt Electrical consumption watt Absorption électrique watt Consumo de electricidad watt Elektrischer Verbrauch watt											

## SLOT VISION CANALIZZATO



## SLOT VISION REMOTE AIR

